

Date 19/10/2021  
 For the attention of:  
 Reference  
 Operator



**COMMERCIAL UNIT COOLER:CUBIC**  
**Type: F27HC 19 N 6 CO2 DX**  
**N. units: 1**

**Spec. CO2 - DX**

Refriger (u) 2021 Ver. 2.2.2.380 - PRICE LIST 1/7/2021

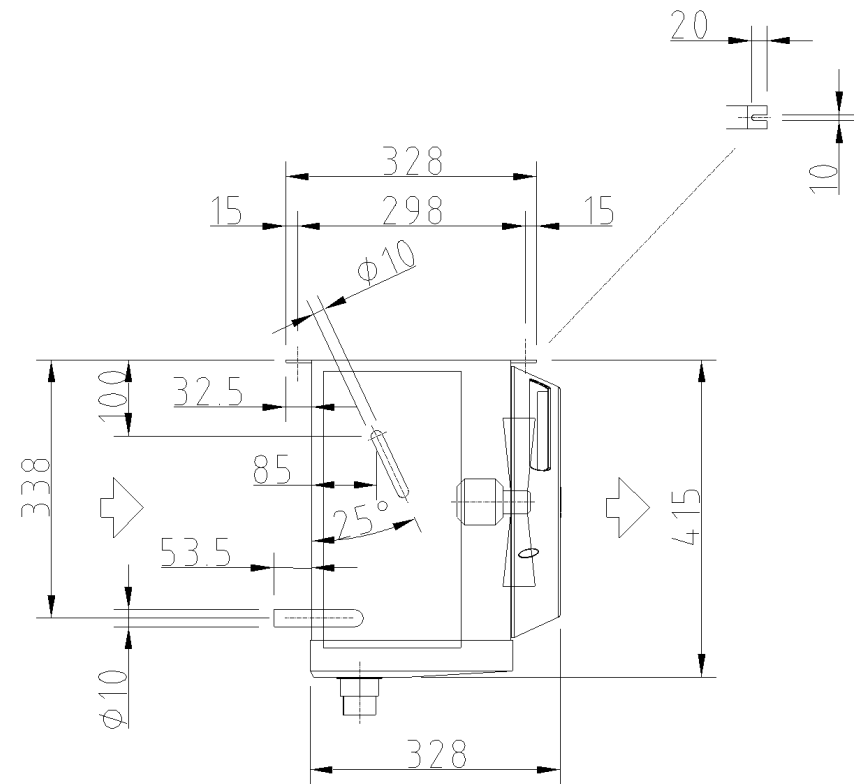
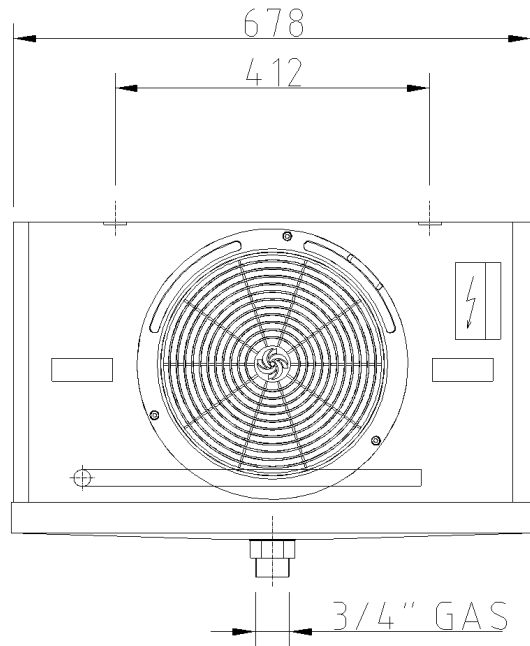
|  |   |                      |   |
|--|---|----------------------|---|
| Inlet air temp. (room)                       | [°C]                                    |                      | 2,0                                     |
| Room relative humidity                       | [%]                                     |                      | 85                                      |
| Refrigerant                                  |   |                      | CO2                                     |
| Altitude                                     | [m]                                     |                      | 0                                       |
| Residual static pressure                     | [Pa]                                    |                      | 0                                       |
| DT1 needed for unit cooler                   | [K]                                     |                      | 10,0                                    |
| <b>Connection</b>                            |   | <b>230V-1PH-50Hz</b> |   |
| <b>Actual capacity</b>                       |   | <b>[W]</b>           | <b>1.790</b>                            |
| Air flow                                     | [m3/h]                                  |                      | 950,0                                   |
| Air throw                                    | [m]                                     |                      | 11                                      |
| Outlet air temperature                       | [°C]                                    |                      | -1,8                                    |
| Evaporating temp                             | [°C]                                    |                      | -8,0                                    |
| DT superheating                              | [K]                                     |                      | 5,0                                     |
| Temp. before expansion valve                 | [°C]                                    |                      | 5,0                                     |
| DT1  | [K]                                     |                      | 10,0                                    |
| DTmlg  | [K]                                     |                      | 7,9                                     |
| Fluid pressure drop                          | [K]                                     |                      | 0,2                                     |
| RC factor (Sensible capacity/Total capacity) | [%]                                     |                      | 71,6                                    |
| Fan motor consumpt.                          | [W]                                     |                      | 85                                      |
| Power draw                                   | [A]                                     |                      | 0,6                                     |
| Max fan absorbed current*                    | [A]                                     |                      | 0,61                                    |
| Fan speed                                    | [1/min]                                 |                      | 1450                                    |
| Sound pressure level (5 m) 5                 | [dB(A)@5m]                              |                      | 37                                      |
| Sound Power Level                            | [dB(A)]                                 |                      | 62                                      |
| N° Fans                                      | [mm]                                    | 1 x 275              | Weight [kg] 11                          |
| Poles  | [n]                                     | 4                    | Connections in [n] x [mm] 1 x 10        |
| Fin spacing                                  | [mm]                                    | 6                    | Connections out [n] x [mm] 1 x 10       |
| Internal volume                              | [dm3]                                   | 0,8                  | Drain tray connection ["] 3/4           |
| Surface                                      | [m2]                                    | 5,6                  | Overall dimensions [mm] 678 x 330 x 415 |
| <b>Max Working pressure</b>                  | <b>[bar]</b>                            | <b>60,0</b>          |   |
| Casing material                              | Powder coated galvanized steel RAL 9003 |                      | Fin material Al                         |
| Header material                              | Cu                                      |                      | Tube material Cu                        |

\* Refer to LU-VE S.p.A. instruction manuals for details, data and standards. Noise level in 5m free field. The current may increase according to temperature frost quantity, external static pressure. The weight and dimensions are not valid for all possible configurations. All fans are ErP 2015-compliant (Directive 2009/125/EC Energy-related products). LU-VE S.p.A. reserves the right to modify and correct at any time, with or without notice, the specifications and prices listed in the Refriger software.

**LUVE S.p.A Headquarters Uboldo ITALY** via caduti della Liberazione, 53  
 Tel +39 02 967161 Fax +39 02 96780560 mail [sales@luvegroup.com](mailto:sales@luvegroup.com) web [www.luve.it](http://www.luve.it)

|                  |              |                |                 |               |              |                      |
|------------------|--------------|----------------|-----------------|---------------|--------------|----------------------|
| <b>Australia</b> | <b>USA</b>   | <b>France</b>  | <b>Thailand</b> | <b>Poland</b> | <b>Italy</b> | <b>UAE</b>           |
| <b>Austria</b>   | <b>China</b> | <b>Germany</b> | <b>India</b>    | <b>Russia</b> | <b>Spain</b> | <b>UK &amp; Eire</b> |

For contact details see [www.luve.it](http://www.luve.it)



|       |          |                           |
|-------|----------|---------------------------|
| Date  | 2-3-2008 | Type: F27HC 19 N 6 CO2 DX |
| Scale | 1:1      | Code: 10108321            |
|       |          |                           |

Standard unit without accessories. For the connections please refer to the data sheet.